

# DRIFTLESS WISCONSIN

LIVE MUSIC • ARTS & CULTURE • OUTDOOR RECREATION • FOOD SCENE • HISTORICAL ATTRACTIONS • ORGANIC FARMING • EVENTS • SHOPPING

## Unglaciaded Topography

Untouched by the last glacier, the Driftless Area is characterized by its beautifully sculpted topography. Forested bluffs reach down to river valleys cut into limestone bedrock by cold-water trout streams. Karst geology can be seen in caves, springs and sinkholes. Forests, prairie remnants, wetlands, and grasslands provide habitat for wildflowers and wildlife. Land is farmed by Norwegian descendants and back-to-the-land organic farmers.

## Outdoors in Every Season

Spring brings the wildflowers that push their way through the leaves on the forest floor, and with them, other delicacies—more mushrooms, fiddlehead ferns, and ramps. Hundreds of bird species begin their migration up the Mississippi Flyway and through contiguous forests. Trout fishing begins and turkey hunters prowl the woods. Canoes and campers signal the start of summer. Mountain bikers share the trails with horseback riders and backpackers. The backwaters near the Mississippi are full of anglers and fishing boats. Fall brings visitors to the orchards for every variety of apple, and the baked goods and jams that accompany the harvest. Wineries are harvesting their grapes, and the farmers markets are at their peak. The fall colors draw people to the roads. Later, the hunters come in search of turkey and white-tailed deer. When winter arrives, the snow beckons the hardy outdoorsmen. Cross-country skiers and snowshoers take to the trails and the fields and hikers explore ice caves.

## Arts in Abundance

Hundreds of artists find the Driftless Area an inspiration in its beauty and a peaceful place in which to work. Visual artists create in paint or pastel, in clay or glass, in wood or metal, or with a camera. There are poets, authors, actors, and storytellers. Visit an artists' cooperative to find a cornucopia of local art offerings. Don't miss the Driftless Area Art Festival or The Winding Roads Art Tour, which showcases regional visual and performing artists.

If it's music you're after, enjoy the Driftless Music Festival held under the oaks in Eckhart Park in Viroqua, Live in Viroqua, Vernon County Music in the Parks, Driftless Music Gardens, Larryfest, near LaFarge—a must-see for folk, bluegrass, and old-time music, or the Prairie Dog Blues Festival on St. Feriole Island.

## History on Display

Mound Builders and Native Americans, explorers and fur traders, immigrant settlers and pioneers all left their mark on the region and infused their folkways and traditions. Preservation and restoration efforts make this history available to us, as do reenactments of historical events or celebrations of earlier times. Visit the Villa Louis, a beautifully restored Victorian estate in Prairie du Chien. This National Historic Landmark hosts the Carriage Classic, one of the largest carriage driving competitions in the nation. Norskedalen Nature and Heritage Center and Skumrud Heritage Farm in Coon Valley is a nature and heritage center dedicated to preserving, interpreting and sharing the natural environment and cultural heritage of the area. Trace the Black Hawk "Trail of Tears" or take a short trip across the Mississippi to Effigy Mounds National Monument to view incredible prehistoric burial mounds that are prolific throughout southwestern Wisconsin.

## Something for Everyone

The great diversity of the area means something to suit the taste of every visitor. You can simply enjoy the peace and beauty of the countryside with a good book, a cup of coffee from a local roaster, or a glass of wine from a local vineyard. You can put on your waders and hope to outwit a brook trout on a cool foggy morning. You can get on your bike and wind your way through magnificent scenery. You can shop for art, vintage clothes and antiques, handmade furniture, artisanal cheeses, or locally-grown foods.

## Driftless ('drift-lis) ADJECTIVE, geography

1. Lacking or free of glacial drift: *the driftless area in the American Midwest is unglaciated*
2. The Driftless Area geography is characterized by its steep, rugged landscape, and by the largest concentration of cold-water streams in the world.



LISTINGS IN ORDER OF CATEGORY, THEN COMMUNITY

DriftlessWisconsin.com

## DINING/BEVERAGES

- 18 Kahoun Backstreet Barn LLC  
608-412-4420  
107 Kahoun St., Eastman  
kahounbackstreetbarn.com
- 16 Hillsboro Brewing Co.  
608-489-7486  
206 E. Madison St., Hillsboro  
hillsborobrewingcompany.com
- 14 Rockton Bar  
608-625-4395  
827 Rockton Loop, Rockton  
Find us on Facebook
- 1 Pete's Hamburger Stand  
608-326-2635  
118 W. Blackhawk Ave.,  
Prairie du Chien  
www.peteshamburgers.com
- 19 Kickapoo Creekside  
608-629-5565  
827 West Kickapoo St., Readstown  
www.kickapoo Creekside.com

- 9 Lou's Railroad Street Station  
608-476-2134  
115 Railway Ave., Steuben  
Find us on Facebook
- Cheese Corner  
608-637-7779  
323 N Main St., Viroqua  
http://cheese-corner.com
- 8 Maggie Gelato  
608-667-0909  
113 South Main St., Viroqua  
Instagram: @maggie\_gelato
- 8 Round River Distilling  
608-606-1170  
741 S. Main St., Viroqua  
www.roundriverdistilling.com
- 8 Tangled Hickory  
608-637-3031  
120 S. Main St., Viroqua  
www.tangledhickory.com
- 7 Birch Point Distillery  
608-634-3100  
310 Ski Hill Dr., Westby  
www.birchpointdistillery.com
- 7 Daily Brew Co.  
608-634-4001  
100 Washington St., Westby  
www.dailybrewco.org

"Come to me, all you who labor,  
and I will give you rest."  
Matthew 11:28

### SHRINE of OUR LADY of GUADALUPE

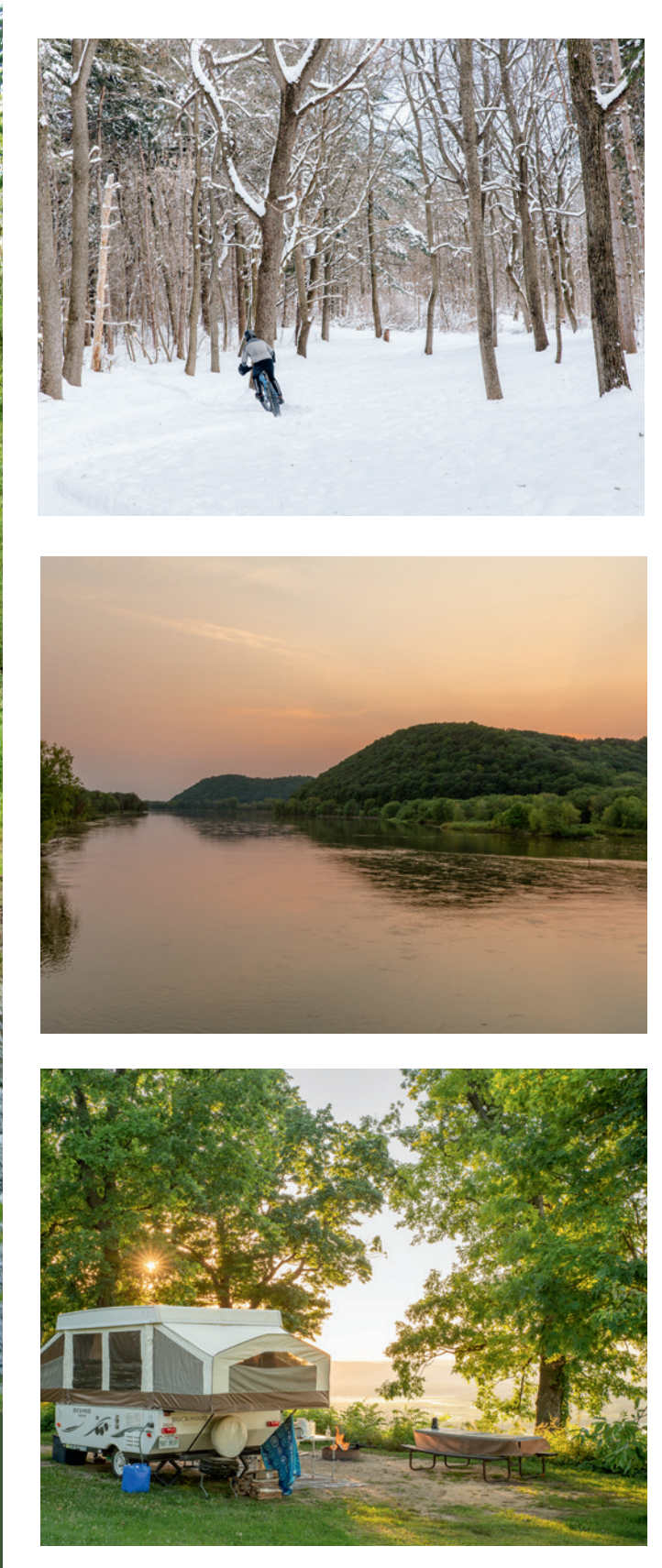
A hilltop Shrine Church, prayer gardens, and wooded grounds above the Mississippi bluff.

OPEN DAILY, FREE TO VISIT

Plan your pilgrimage.  
GuadalupeShrine.org  
La Crosse, Wisconsin

FREE MAP INSIDE!

DriftlessWisconsin.com



DriftlessWisconsin.com  
Driftless Wisconsin, Inc  
PO Box 201, Prairie du Chien, WI 53821  
info@DriftlessWisconsin.com

### PARTNERS

Crawford County Finance Committee  
Vernon County Tourism, Promotion & Economic Development  
Citizens First Bank  
Dairyland Power

### SPONSORS

Cabela's  
Village of La Farge/ LAPA  
Maple Valley  
City of Westby  
Village of Ferryville  
Mississippi Valley Conservancy  
Snowtrekker Tents

## LODGING

- 3 Riverscape Vacation Rentals  
563-370-3355  
116 Eagle Crest Drive, DeSoto  
www.riverscapevacationrentals.com
- 16 Blue Highway Lodge  
608-580-3686  
S2669 Co. Hwy V, Hillsboro  
www.bluehighwaylodge.com
- 12 Kickapoo Valley Guest Cabins  
608-625-6222  
E11761 Co. Rd. P, La Farge  
www.kvranchcabins.com
- 15 Driftwood Inn Motel  
608-337-4660  
203 N. Garden St., Ontario  
www.driftwoodinnontario.com
- 1 Sports Unlimited Campground & Barnyard 9  
608-326-2141  
32750 County Rd K, Prairie du Chien  
www.sportsunlimitedcampground.com
- 8 Hickory Hill Motel  
608-637-3104  
S5539 U.S. Hwy 14, Viroqua  
www.stayathickoryhill.com
- 8 Hotel Fortney and Lounge  
608-638-3100  
100 N. Main St., Viroqua  
www.hotelfortney.com
- 8 Nature Nooks Retreat  
608-637-3928  
S4878 County Rd. S, Viroqua  
www.naturenooksretreat.com
- 8 Viroqua Heritage Inn, A Boutique Hotel  
608-637-3306  
217 E. Jefferson St., Viroqua  
www.herinn.com
- Kickapoo Rentals  
Wisconsin  
Vernon & Crawford County Rentals  
www.kickapoorentals.com

- 11 Village of Soldiers Grove  
608-624-3264  
102 Passive Sun Dr., Soldiers Grove  
http://soldiersgrove.municipalimpact.com/
- 8 Viroqua Chamber Main Street  
608-637-2575  
220 S. Main St., Suite 162A, Viroqua  
www.viroqua-wisconsin.com

## PROFESSIONAL/SERVICES

- 16 Farmers State Bank  
Branch of One Community Bank  
608-489-2621  
726 Water Ave., Hillsboro  
www.fsbhillsboro.com
- 1 Jon Miles Real Estate  
608-988-7400 - cell/text  
611 E. Blackhawk Ave.,  
Prairie du Chien  
www.jonmilesrealestate.com
- 1 Supreme Graphics  
608-326-7194  
223 E. Blackhawk Ave.,  
Prairie du Chien  
www.supremegraphics.com
- 8 Century 21 Affiliated - Southwest WI  
608-637-8882  
742 S. Main St., Viroqua  
www.bringmehomec21.com
- 8 County Seat Laundry  
608-638-8060  
1218 N. Main St., Viroqua  
www.countyseatlaundry.com
- 8 Hall Realty  
608-637-3237  
810 N. Main St., Viroqua  
www.hallrealtyco.com
- 7 Vernon Electric Cooperative  
608-634-3121  
110 Saugstad Rd., Westby  
www.vernonelectric.org



- 8 Vernon County Historical Society and Museum  
608-637-7396  
410 S. Center Ave., Viroqua  
www.vernoncountyhistory.org
- 7 Snowflake Ski & Golf Club  
608-634-3211  
E7940 County Rd P, Westby  
www.snowflakeskiclub.com

## SHOPPING

- 10 Sunrise Orchards, Inc  
608-735-4645  
48340 Hwy 171, Gays Mills  
www.sunriseapples.com
- 10 Ten Hill Cycle  
608-630-5611  
120 Sunset Ridge Ave, Suite 115,  
Gays Mills  
www.tenhillcycle.com
- 16 Hillsboro Hosta & Greenhouse  
608-766-0022  
S2045 Hwy HH, Hillsboro  
www.hillsborohosta.com
- 1 Driftless Downtown Prairie du Chien  
Blackhawk Ave., Prairie du Chien  
www.driftlessdevelopment.com
- 14 Wildthings Fur Hats  
608-625-4181  
S2471 State Hwy 131, Rockton  
www.wildthingsfur.com
- 1 Mississippi Meats  
608-326-0960  
114 S. Dousman St., Prairie du Chien  
Find us on Facebook
- 1 The Local Oven Bakery  
608-629-0960  
213 E. Blackhawk Ave., Prairie du Chien  
www.thelocalovengoodness.com
- 17 Johnson's One Stop  
608-734-3434  
134 Main St. Hwy 27, Seneca  
www.johnsonsonestop.com

- 8 Sleepy Hollow Rent-A-Car  
608-637-8300  
150 Fairlane Dr., Viroqua  
www.sleepyhollowauto.com/  
rent-a-car.htm
- 8 Vernon Vineyards  
608-632-7042  
S3426 Peterson Ln., Viroqua  
www.vernonvineyards.com
- 8 Viroqua Food Co-op  
608-637-7511  
609 N. Main St., Viroqua  
www.viroquafoodcoop.com
- 8 Viroqua Public Market  
608-637-1912  
215 S. Main St., Viroqua  
open 7 days a week
- 8 VIVA Gallery  
608-637-6918  
217 S. Main St., Viroqua  
www.vivagallery.net

## COMMUNITIES/TOURISM ORGANIZATIONS

- 3 De Soto Area Tourism  
608-790-7118  
PO Box 37, De Soto  
www.desotoareatourism.com
- 2 Ferryville Tourism Council  
608-632-3362  
PO Box 236, Ferryville  
www.visitferryville.com
- 2 Wisconsin Mississippi River Parkway Commission  
608-267-2094  
14767 Eagle Ridge Rd, Ferryville  
www.wigr.com
- 13 Village of La Farge  
608-625-4422  
105 W. Main St.  
PO Box 37, La Farge  
www.lafarge-wisconsin.com
- 1 Prairie du Chien Tourism Council  
608-326-8555  
211 S. Main St., PO Box 326  
Prairie du Chien  
www.prairie Duchien.org

## RECREATION/ATTRACTION

- 4 Shrine of Our Lady of Guadalupe  
608-782-5440  
5250 Justin Rd., La Crosse  
www.guadalupe Shrine.org
- 13 Kickapoo Valley Reserve  
608-625-2960  
S3661 State Rd. 131, La Farge  
http://kvr.state.wi.us
- 15 Drifty's Canoe Rental  
608-337-4288  
Hwy. 33 & 131 N., Ontario  
www.drifscanoerental.net
- 1 Fort Crawford Museum  
608-326-6960  
717 S. Beaumont Rd., Prairie du Chien  
www.fortcrawfordmuseum.com
- 11 Driftless Area Art Festival  
Sept 19-20, 2026  
608-326-7333  
101 Church St., Soldiers Grove  
www.driftlessareaartfestival.com
- 8 Driftless Angler  
608-637-8779  
106 S. Main St., Viroqua  
www.driftlessangler.com

- 7 Winding Roads Art Tour  
Wisconsin - Viroqua Area  
Annually 2nd Weekend in June  
www.windingroadsart.com
- 7 Branches Winery  
608-634-9463  
E6796 Old Line Rd., Westby  
www.brancheswinery.com
- 7 Treasures on Main Resale & Antiques  
608-634-4474  
117 S. Main St., Westby  
www.treasuresonmain.net

## DRIFTLESS WISCONSIN

has some of the best fly fishing in the country with the constant source of cool clean water in spring-fed streams. The region is known for being unglaciated with its beautiful limestone land features and unique flora and fauna found on the bluffs and in the river valleys.



### Drifty's Canoe Rental

State Hwy 33 | Ontario, WI 54651  
(608) 337-4288 | DriftysCanoes@centurytel.net  
www.driftyscanorental.net

Come and experience nature with a canoe or kayak trip down the beautiful Kickapoo River with Drifty's Canoe Rental. The Kickapoo River offers unmatched scenery of the driftless region.

Canoe Rentals | Kayak Rentals | Life Jackets  
Car Spotting | Shuttles | Pick Up Service



EXPLORE, RELAX, AND STAY A WHILE IN DRIFTLESS WISCONSIN.



### APPLE DESTINATION

of the Midwest!

## Sunrise Orchards

INCORPORATED

- ☑ Sunrise Orchards (Main Location)  
48340 Hwy 171 Gays Mills, WI 54631 • (608) 735-4645
- ☑ Sunrise Orchards at Hillcrest  
16602 US Hwy 61 • Gays Mills, WI 54631 • (608) 624-5753

Open Mid Aug thru Mid Dec

- Apples • Donuts • Cider
- Specialty Foods
- Apple Gift Boxes
- Online Store Open 24/7

www.SunriseApples.com

### VIROQUA, WI

YOUR BASECAMP FOR ADVENTURE

www.viroquachamber.com

### Prairie du Chien Wisconsin

PdC Tourism: 800-732-1673  
WI Travel Center/PdC: 608-326-2241  
www.praireduchien.org

### WELCOME TO FERRYVILLE

A PLACE FOR ALL SEASONS

WISCONSIN

Fishing/Hunting • Bird Watch  
Restaurants • Public Boat Launch  
Sugar Creek Park  
Harley Heaven • Train Watching

www.visitferryville.com

### HOTEL FORTNEY & Lounge

The Driftless Experience in a Historic Setting

Boutique Accommodations in the Heart of Historic Downtown Viroqua

14 uniquely curated • luxurious guest rooms  
Exquisite wine list, craft beer • cocktails  
Within walking distance of shopping • dining

608.638.3100  
www.hotelfortney.com  
100 N. Main Street Viroqua

### Village of Soldiers Grove

Great Dining, Lodging, and Camping!  
Expansive park located in the middle of the Village next to the Kickapoo River.

Soldiers Grove Dairy Days  
Driftless Area Art Festival  
June 19-20, 2026  
September 19-20, 2026

### Kickapoo Valley Guest Cabins

kickapoocabins.com  
608.625.6222

### BIRCH POINT DISTILLERY

310 Skihill Drive, Westby, WI

Hand-crafted spirits made from locally sourced milk sugars

birchpointdistillery.com

### Viroqua food + op

good. local. food.

grocery & deli  
viroquafood.coop

### DRIFTLESS DOWNTOWN

Prairie du Chien

## EXPLORE

Blackhawk Ave

SHOP, EAT, PLAY!

- Front Porch Quilts
- Mississippi Meats
- Panka Shoe Store
- Something for Everyone
- Stark's Sport Shop
- Supreme Graphics
- The Local Oven Bakery
- The Pickett Fence

Historic Downtown  
Prairie du Chien

### Village of LaFarge

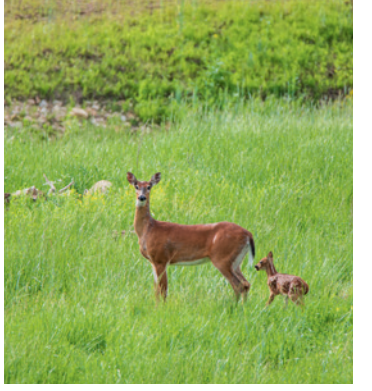
Be sure to visit our Village Park & Bean Park

- Visitor Center • Library w/WiFi • Camping w/Electric • Farmers Market
- Restrooms/Shower • Basketball Court • Disc Golf Course
- Picnic Shelters • ATV/UTV friendly • Handicap Accessible Fishing Pier

LOOK FOR LA FARGE LISTINGS IN THIS BROCHURE FOR ALL YOUR TRAVELING NEEDS!!!

608.625.4422

Go to [www.lafarge-wisconsin.com](http://www.lafarge-wisconsin.com) to checkout businesses & calendar of events. Check out LaFarge Area Partner's Association on Facebook



### PUT YOUR BUSINESS ON THE MAP!

Advertise your Vernon or Crawford County business on the official Driftless Wisconsin map and website - connect with locals and visitors exploring the region all year long.

Contact: [advertise@DriftlessWisconsin.com](mailto:advertise@DriftlessWisconsin.com)



### TANGLED HICKORY

VIROQUA, WI

- CRAFT COCKTAILS
- BEER & WINE
- ELEVATED BAR FOOD
- OUTDOOR SEATING
- GAME ROOM WITH POOL & BARTS

120 S MAIN STREET • DOWNTOWN VIROQUA  
608-637-3031  
www.tangledhickory.com

### Bringing You Home in the Driftless Region for over 28 Years

## CENTURY 21

Affiliate REAL ESTATE

608.637.8882

Michael Williams  
Broker/Owner  
(608) 728-4105

BringMeHomeC21.com

### De Soto, WI

Nestled in the heart of the Driftless

www.DeSotoAreaTourism.com

- Fishing, Hunting & Bird Watching
- Camping & Recreation at Blackhawk Park
- Lodging
- Dining
- Winery
- Library

### COUNTY SEAT LAUNDRY

Big washers and dryers  
Self serve or drop off  
Debit and credit accepted

Come see us at  
1218 N. Main St., Viroqua  
Owner attended  
countyseatlaundry.com

### Endless Bluffs, Mighty Mississippi and the Kickapoo River Valley

### YOUR LOCAL LIVE MUSIC GUIDE

SCAN HERE

### VISIT OUR WEBSITE

DriftlessWisconsin.com

FOR OUTDOOR ADVENTURES AND SCENIC ITINERARIES

Photographers: Jason Ray & Reach Travel Media

Distance in Miles to:

From	Wilton	Viroqua	Prairie du Chien
Chicago, IL	251	261	244
Milwaukee, WI	180	198	181
Green Bay, WI	169	204	241
Minneapolis, MN	188	188	214
Des Moines, IA	300	288	227
Quad Cities, IA	183	159	141

Follow us on social @DriftlessWisconsin

Driftless Wisconsin is a 501(c)3 non-profit organization. © Copyright 2025. While every effort has been made to ensure accuracy of the information in this guide, changes may have occurred between the time of completion and publication. Detailed research has taken place regarding historical facts; however, sometimes accounts can differ depending on the source. Driftless Wisconsin, Inc. assumes no responsibility for errors, changes, or omissions. Reproduction of or alterations to the materials used in the publication requires the written consent of Driftless Wisconsin, Inc.

DriftlessWisconsin.com