

DRIFTLESS WISCONSIN

LIVE MUSIC • ARTS & CULTURE • OUTDOOR RECREATION • FOOD SCENE • HISTORICAL ATTRACTIONS • ORGANIC FARMING • EVENTS • SHOPPING

Unglaciaded Topography

Untouched by the last glacier, the Driftless Area is characterized by its beautifully sculpted topography. Forested bluffs reach down to river valleys cut into limestone bedrock by cold-water trout streams. Karst geology can be seen in caves, springs and sinkholes. Forests, prairie remnants, wetlands, and grasslands provide habitat for wildflowers and wildlife. Land is farmed by Norwegian descendants and back-to-the-land organic farmers.

Outdoors in Every Season

Spring brings the wildflowers that push their way through the leaves on the forest floor, and with them, other delicacies—more mushrooms, fiddlehead ferns, and ramps. Hundreds of bird species begin their migration up the Mississippi Flyway and through contiguous forests. Trout fishing begins and turkey hunters prowl the woods. Canoes and campers signal the start of summer. Mountain bikers share the trails with horseback riders and backpackers. The backwaters near the Mississippi are full of anglers and fishing boats. Fall brings visitors to the orchards for every variety of apple, and the baked goods and jams that accompany the harvest. Wineries are harvesting their grapes, and the farmers markets are at their peak. The fall colors draw people to the roads. Later, the hunters come in search of turkey and white-tailed deer. When winter arrives, the snow beckons the hardy outdoorsmen. Cross-country skiers and snowshoers take to the trails and the fields and hikers explore ice caves.

Arts in Abundance

Hundreds of artists find the Driftless Area an inspiration in its beauty and a peaceful place in which to work. Visual artists create in paint or pastel, in clay or glass, in wood or metal, or with a camera. There are poets, authors, actors, and storytellers. Visit an artists' cooperative to find a cornucopia of local art offerings. Don't miss the Driftless Area Art Festival or The Winding Roads Art Tour, which showcases regional visual and performing artists.

If it's music you're after, enjoy the Driftless Music Festival held under the oaks in Eckhart Park in Viroqua, Live in Viroqua, Vernon County Music in the Parks, Driftless Music Gardens, Larryfest, near LaFarge—a must-see for folk, bluegrass, and old-time music, or the Prairie Dog Blues Festival on St. Feriole Island.

History on Display

Mound Builders and Native Americans, explorers and fur traders, immigrant settlers and pioneers all left their mark on the region and infused their folkways and traditions. Preservation and restoration efforts make this history available to us, as do reenactments of historical events or celebrations of earlier times. Visit the Villa Louis, a beautifully restored Victorian estate in Prairie du Chien. This National Historic Landmark hosts the Carriage Classic, one of the largest carriage driving competitions in the nation. Norskedalen Nature and Heritage Center and Skumrsrud Heritage Farm in Coon Valley is a nature and heritage center dedicated to preserving, interpreting and sharing the natural environment and cultural heritage of the area. Trace the Black Hawk "Trail of Tears" or take a short trip across the Mississippi to Effigy Mounds National Monument to view incredible prehistoric burial mounds that are prolific throughout southwestern Wisconsin.

Something for Everyone

The great diversity of the area means something to suit the taste of every visitor. You can simply enjoy the peace and beauty of the countryside with a good book, a cup of coffee from a local roaster, or a glass of wine from a local vineyard. You can put on your waders and hope to outwit a brook trout on a cool foggy morning. You can get on your bike and wind your way through magnificent scenery. You can shop for art, vintage clothes and antiques, handmade furniture, artisanal cheeses, or locally-grown foods.

Driftless ('drift-lis) ADJECTIVE, geography

1. Lacking or free of glacial drift: *the driftless area in the American Midwest is unglaciated*
2. The Driftless Area geography is characterized by its steep, rugged landscape, and by the largest concentration of cold-water streams in the world.



LISTINGS IN ORDER OF CATEGORY, THEN COMMUNITY

DriftlessWisconsin.com

DINING/BEVERAGES

- 18 Kahoun Backstreet Barn LLC
608-412-4420
107 Kahoun St., Eastman
kahounbackstreetbarn.com
- 16 Hillsboro Brewing Co.
608-489-7486
206 E. Madison St., Hillsboro
hillsborobrewingcompany.com
- 14 Rockton Bar
608-625-4395
827 Rockton Loop, Rockton
Find us on Facebook
- 1 Pete's Hamburger Stand
608-326-2635
118 W. Blackhawk Ave.,
Prairie du Chien
www.peteshamburgers.com
- 19 Kickapoo Creekside
608-629-5565
827 West Kickapoo St., Readstown
www.kickapoo Creekside.com

- 9 Lou's Railroad Street Station
608-476-2134
115 Railway Ave., Steuben
Find us on Facebook
- Cheese Corner
608-637-7779
323 N Main St., Viroqua
http://cheese-corner.com
- 8 Maggie Gelato
608-667-0909
113 South Main St., Viroqua
Instagram: @maggie_gelato
- 8 Round River Distilling
608-606-1170
741 S. Main St., Viroqua
www.roundriverdistilling.com
- 8 Tangled Hickory
608-637-3031
120 S. Main St., Viroqua
www.tangledhickory.com
- 7 Birch Point Distillery
608-634-3100
310 Sk Hill Dr., Westby
www.birchpointdistillery.com
- 7 Daily Brew Co.
608-634-4001
100 Washington St., Westby
www.dailybrewco.org

"Come to me, all you who labor, and I will give you rest."
Matthew 11:28

SHRINE of OUR LADY of GUADALUPE

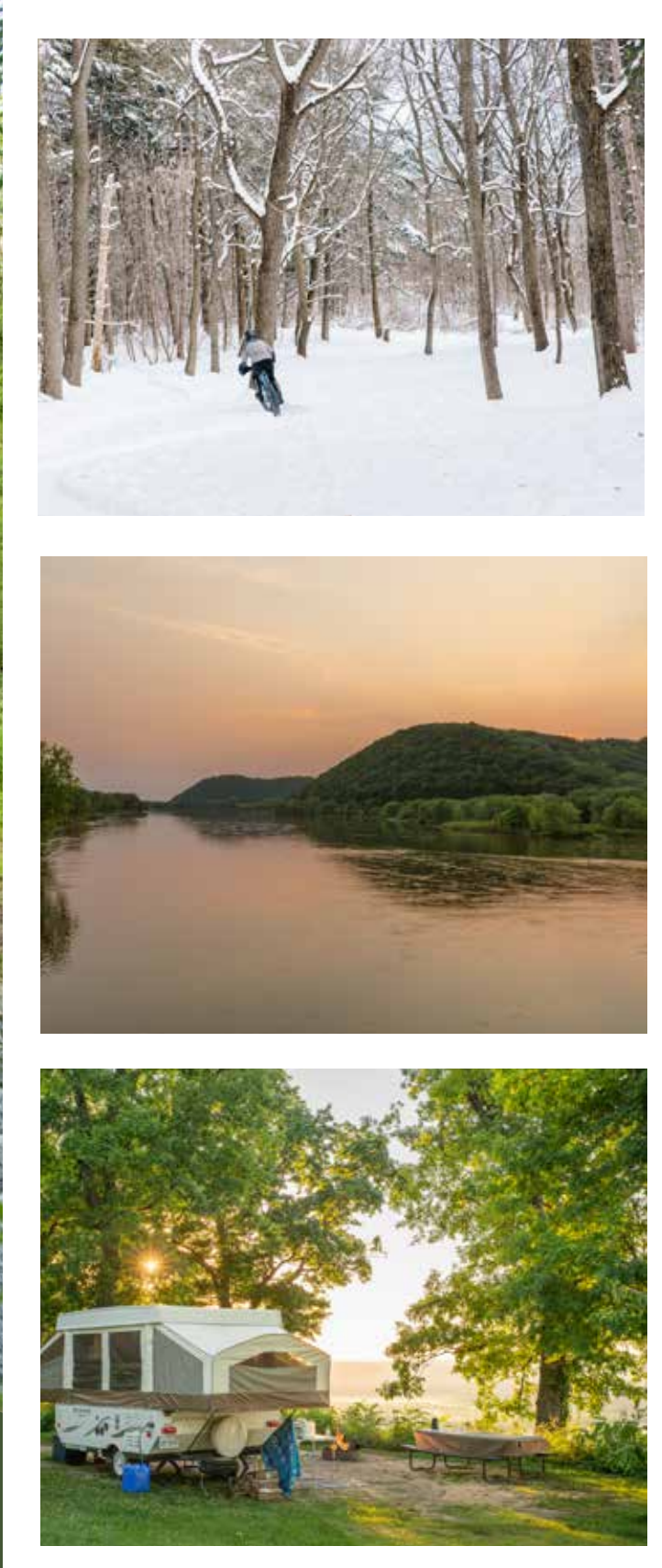
A hilltop Shrine Church, prayer gardens, and wooded grounds above the Mississippi bluff.

OPEN DAILY, FREE TO VISIT

Plan your pilgrimage.
GuadalupeShrine.org
La Crosse, Wisconsin

FREE MAP INSIDE!

DriftlessWisconsin.com



DriftlessWisconsin.com
Driftless Wisconsin, Inc
PO Box 201, Prairie du Chien, WI 53821
info@DriftlessWisconsin.com

PARTNERS
Crawford County Finance Committee
Vernon County Tourism, Promotion & Economic Development
Citizens First Bank
Dairyland Power

SPONSORS
Cabela's
Village of La Farge/ LAPA
Maple Valley
City of Westby
Village of Ferryville
Mississippi Valley Conservancy
Snowtrekker Tents

LODGING

- 3 Riverscape Vacation Rentals
563-370-3355
116 Eagle Crest Drive, DeSoto
www.riverscapevacationrentals.com
- 16 Blue Highway Lodge
608-580-3686
S2669 Co. Hwy V, Hillsboro
www.bluehighwaylodge.com
- 12 Kickapoo Valley Guest Cabins
608-625-6222
E11761 Co. Rd. P, La Farge
www.kvranchcabins.com
- 15 Driftwood Inn Motel
608-337-4660
203 N. Garden St., Ontario
www.driftwoodinnontario.com
- 1 Sports Unlimited Campground & Barnyard 9
608-326-2141
32750 County Rd K, Prairie du Chien
www.sportsunlimitedcampground.com
- 8 Hickory Hill Motel
608-637-3104
S5539 U.S. Hwy 14, Viroqua
www.stayathickoryhill.com
- 8 Hotel Fortney and Lounge
608-638-3100
100 N. Main St., Viroqua
www.hotelfortney.com
- 8 Nature Nooks Retreat
608-637-3928
S4878 County Rd. S, Viroqua
www.naturenooksretreat.com
- 8 Viroqua Heritage Inn, A Boutique Hotel
608-637-3306
217 E. Jefferson St., Viroqua
www.herinn.com
- Kickapoo Rentals
Wisconsin
Vernon & Crawford County Rentals
www.kickapoorentals.com

- 11 Village of Soldiers Grove
608-624-3264
102 Passive Sun Dr., Soldiers Grove
http://soldiersgrove.municipalimpact.com/
- 8 Viroqua Chamber Main Street
608-637-2575
220 S. Main St., Suite 162A, Viroqua
www.viroqua-wisconsin.com

PROFESSIONAL/SERVICES

- 16 Farmers State Bank
Branch of One Community Bank
608-489-2621
726 Water Ave., Hillsboro
www.fsbhillsboro.com
- 1 Jon Miles Real Estate
608-988-7400 - cell/text
611 E. Blackhawk Ave.,
Prairie du Chien
www.jonmilesrealestate.com
- 1 Supreme Graphics
608-326-7194
223 E. Blackhawk Ave.,
Prairie du Chien
www.supremegraphics.com
- 8 Century 21 Affiliated - Southwest WI
608-637-8882
742 S. Main St., Viroqua
www.bringmehomec21.com
- 8 County Seat Laundry
608-634-3211
1218 N. Main St., Viroqua
www.countyseatlaundry.com
- 8 Hall Realty
608-637-3237
810 N. Main St., Viroqua
www.hallrealtyco.com
- 7 Vernon Electric Cooperative
608-634-3121
110 Saugstad Rd., Westby
www.vernonelectric.org



- 8 Vernon County Historical Society and Museum
608-736-7396
410 S. Center Ave., Viroqua
www.vernoncountyhistory.org
- 7 Snowflake Ski & Golf Club
608-634-3211
E7940 County Rd P, Westby
www.snowflakeskiclub.com

SHOPPING

- 10 Sunrise Orchards, Inc
608-735-4645
48340 Hwy 171, Gays Mills
www.sunriseapples.com
- 10 Ten Hill Cycle
608-637-5611
120 Sunset Ridge Ave, Suite 115,
Gays Mills
www.tenhillcycle.com
- 16 Hillsboro Hosta & Greenhouse
608-766-0022
S2045 Hwy HH, Hillsboro
www.hillsborohosta.com
- 1 Driftless Downtown Prairie du Chien
Blackhawk Ave., Prairie du Chien
www.driftlessdevelopment.com
- 14 Wildthings Fur Hats
608-625-4181
S2471 State Hwy 131, Rockton
www.wildthingsfur.com
- 1 Mississippi Meats
608-326-6328
114 S. Dousman St., Prairie du Chien
Find us on Facebook
- 1 The Local Oven Bakery
608-326-0960
213 E. Blackhawk Ave., Prairie du Chien
www.thelocalovengoodness.com
- 17 Johnson's One Stop
608-734-3434
134 Main St. Hwy 27, Seneca
www.johnsonsonestop.com

- 8 Sleepy Hollow Rent-A-Car
608-637-8300
150 Fairlane Dr., Viroqua
www.sleepyhollowauto.com/
rent-a-car.htm
- 8 Vernon Vineyards
608-632-7042
S3426 Peterson Ln., Viroqua
www.vernonvineyards.com
- 8 Viroqua Food Co-op
608-637-7511
609 N. Main St., Viroqua
www.viroquafoodcoop.com
- 8 Viroqua Public Market
608-637-1912
215 S. Main St., Viroqua
open 7 days a week
- 8 VIVA Gallery
608-637-6918
217 S. Main St., Viroqua
www.vivagallery.net
- 8 Winding Roads Art
Wisconsin - Viroqua Area
Annually 2nd Weekend in June
www.windingroadsart.com
- 7 Branches Winery
608-634-9463
E6796 Old Line Rd., Westby
www.brancheswinery.com
- 7 Treasures on Main Resale & Antiques
608-634-4474
117 S. Main St., Westby
www.treasuresonmain.net

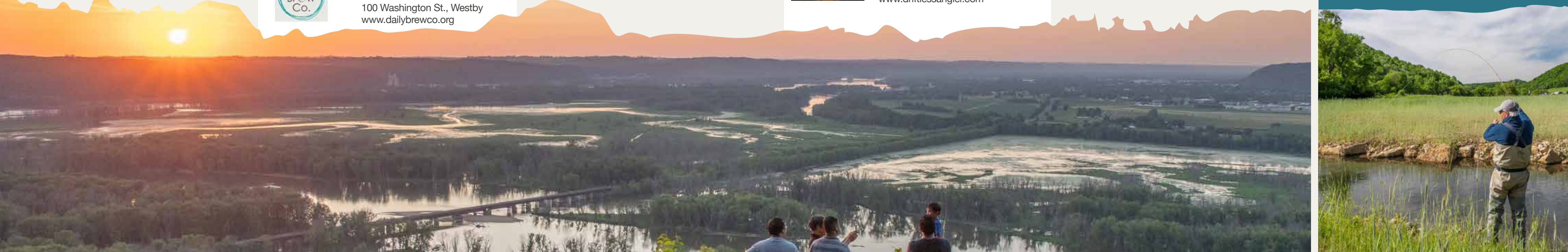
COMMUNITIES/TOURISM ORGANIZATIONS

- 3 De Soto Area Tourism
608-790-7118
PO Box 37, De Soto
www.desotoareatourism.com
- 2 Ferryville Tourism Council
608-632-3362
PO Box 236, Ferryville
www.visitferryville.com
- 2 Wisconsin Mississippi River Parkway Commission
608-267-2094
14767 Eagle Ridge Rd, Ferryville
www.wigr.com
- 13 Village of La Farge
608-625-4422
105 W. Main St.
PO Box 37, La Farge
www.lafarge-wisconsin.com
- 1 Prairie du Chien Tourism Council
608-326-8555
211 S. Main St., PO Box 326
Prairie du Chien
www.prairieduchien.org

RECREATION/ATTRACTION

- 4 Shrine of Our Lady of Guadalupe
608-782-5440
5250 Justin Rd., La Crosse
www.guadalupe Shrine.org
- 13 Kickapoo Valley Reserve
608-625-2960
S3661 State Rd. 131, La Farge
http://kvr.state.wi.us
- 15 Drifty's Canoe Rental
608-337-4288
Hwy. 33 & 131 N., Ontario
www.drifscanoerental.net
- 1 Fort Crawford Museum
608-326-6960
717 S. Beaumont Rd., Prairie du Chien
www.fortcrawfordmuseum.com
- 11 Driftless Area Art Festival
Sept 19-20, 2026
608-326-7333
101 Church St., Soldiers Grove
www.driftlessareaartfestival.com
- 8 Driftless Angler
608-637-8779
106 S. Main St., Viroqua
www.driftlessangler.com

DRIFTLESS WISCONSIN
has some of the best fly fishing in the country with the constant source of cool clean water in spring-fed streams. The region is known for being unglaciated with its beautiful limestone land features and unique flora and fauna found on the bluffs and in the river valleys.



Drifty's Canoe Rental

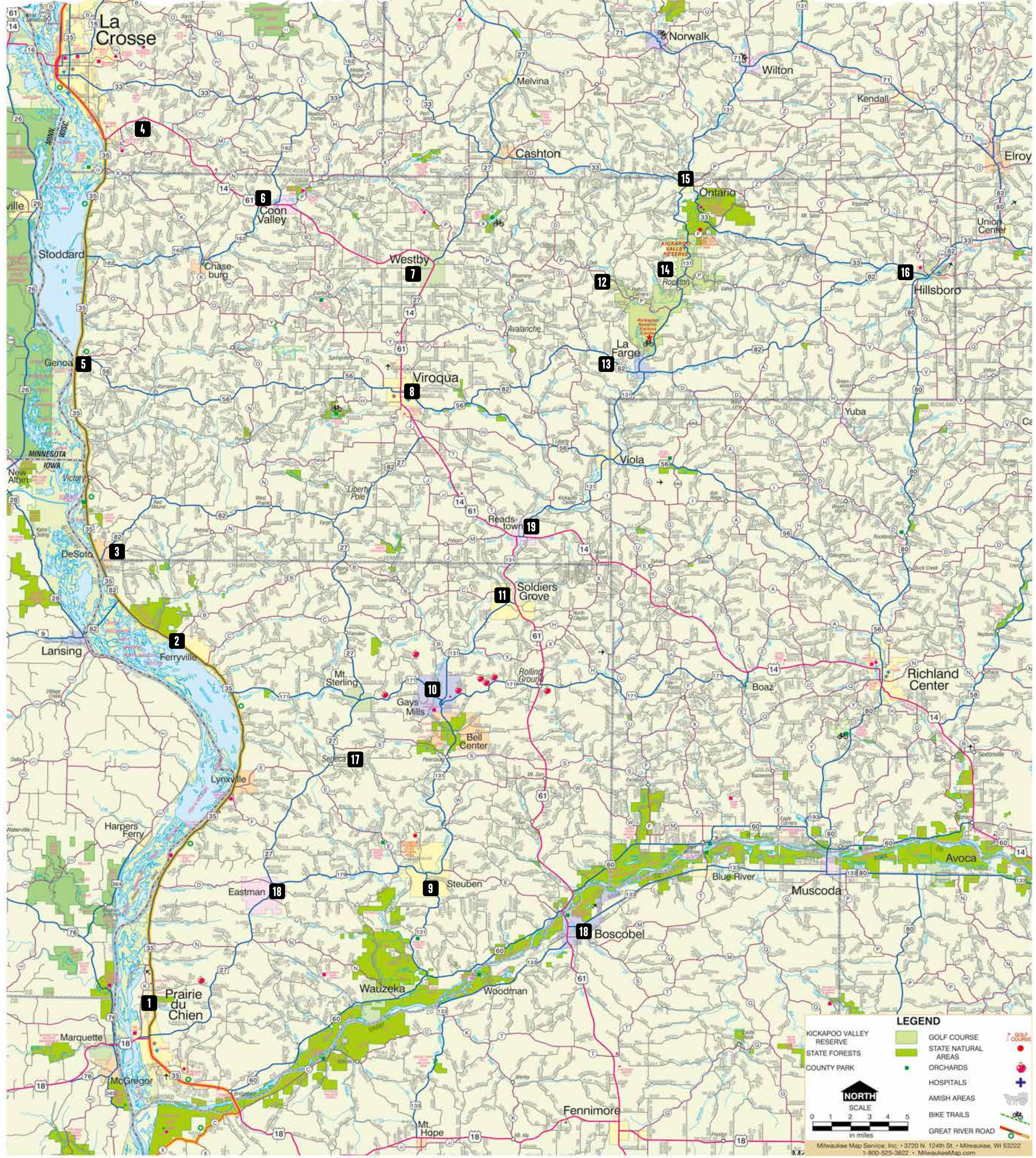
State Hwy 33 | Ontario, WI 54651
(608) 337-4288 | DriftysCanoes@centurytel.net
www.driftyscanorental.net

Come and experience nature with a canoe or kayak trip down the beautiful Kickapoo River with Drifty's Canoe Rental. The Kickapoo River offers unmatched scenery of the driftless region.

Canoe Rentals | Kayak Rentals | Life Jackets
Car Spotting | Shuttles | Pick Up Service



EXPLORE, RELAX, AND STAY A WHILE IN DRIFTLESS WISCONSIN.



APPLE DESTINATION

of the Midwest!

Sunrise Orchards

INCORPORATED

- ☑ Sunrise Orchards (Main Location)
48340 Hwy 171 Gays Mills, WI 54631 • (608) 735-4645
- ☑ Sunrise Orchards at Hillcrest
16602 US Hwy 61 • Gays Mills, WI 54631 • (608) 624-5753

Open Mid Aug thru Mid Dec

- Apples • Donuts • Cider
- Specialty Foods
- Apple Gift Boxes
- Online Store Open 24/7

www.SunriseApples.com

VIROQUA, WI

YOUR BASECAMP FOR ADVENTURE

VIROQUA CHAMBER www.viroquachamber.com

Prairie du Chien Wisconsin

PdC Tourism: 800-732-1673
WI Travel Center/PdC: 608-326-2241
www.praireduchien.org

WELCOME TO FERRYVILLE

A PLACE FOR ALL SEASONS
www.visitferryville.com

WISCONSIN

Fishing/Hunting • Bird Watch
Restaurants • Public Boat Launch
Sugar Creek Park
Harley Heaven • Train Watching

www.visitferryville.com

HOTEL FORTNEY & Lounge

The Driftless Experience in a Historic Setting

Boutique Accommodations in the Heart of Historic Downtown Viroqua

14 uniquely curated - luxurious guest rooms
Exquisite wine list, craft beer - cocktails
Within walking distance of shopping + dining

608.638.3300
www.hotelfortney.com
600 N Main Street Viroqua

Village of Soldiers Grove

Great Dining, Lodging, and Camping!
Expansive park located in the middle of the Village next to the Kickapoo River.

Soldiers Grove Dairy Days
Driftless Area Art Festival
June 19-20, 2026
September 19-20, 2026

Kickapoo Valley Guest Cabins

kickapoocabins.com
608.625.6222

BIRCH POINT DISTILLERY

310 Skihill Drive, Westby, WI

Hand-crafted spirits made from locally sourced milk sugars

birchpointdistillery.com

Viroqua food + op

good. local. food.

grocery & deli
viroquafood.coop

DRIFTLESS DOWNTOWN

Prairie du Chien

EXPLORE Blackhawk Ave

SHOP, EAT, PLAY!

- Front Porch Quilts
- Mississippi Meats
- Panka Shoe Store
- Something for Everyone
- Stark's Sport Shop
- Supreme Graphics
- The Local Oven Bakery
- The Pickett Fence

Historic Downtown Prairie du Chien

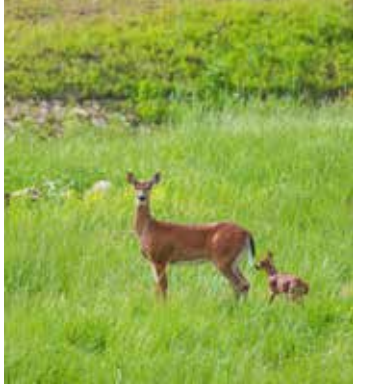
Village of LaFarge

Be sure to visit our Village Park & Bean Park

- Visitor Center • Library w/WIFI • Camping w/Electric • Farmers Market
- Restrooms/Showers • Basketball Court • Disc Golf Course
- Picnic Shelters • ATV/UTV friendly • Handicap Accessible Fishing Pier

LOOK FOR LA FARGE LISTINGS IN THIS BROCHURE FOR ALL YOUR TRAVELING NEEDS!!!
608.625.4422

Go to www.lafarge-wisconsin.com to checkout businesses & calendar of events. Check out LaFarge Area Partner's Association on Facebook



PUT YOUR BUSINESS ON THE MAP!

Advertise your Vernon or Crawford County business on the official Driftless Wisconsin map and website - connect with locals and visitors exploring the region all year long.

Contact: advertise@DriftlessWisconsin.com



TANGLED HICKORY

8 CRAFT COCKTAILS
BEER & WINE
ELEVATED BAR FOOD
OUTDOOR SEATING
GAME ROOM WITH POOL & BARS

128 S MAIN STREET • DOWNTOWN VIROQUA
608-637-3031
www.tangledhickory.com

Bringing You Home in the Driftless Region for over 28 Years

CENTURY 21

Affiliated REAL ESTATE

608.637.8882

Michelle Williams
Broker/Owner
(608) 728-4105

BringMeHomeC21.com

August 1-2
Great River Canoe Race
Veterans Park

De Soto, WI

Nestled in the heart of the Driftless

www.DeSotoAreaTourism.com

- Fishing, Hunting & Bird Watching
- Camping Supply & Military Surplus Store
- Cottonwood Municipal & Veterans Park
- Mississippi River Boat Launch
- Camping & Recreation at Blackhawk Park
- Lodging
- Dining
- Winery
- Library

COUNTY SEAT LAUNDRY

Big washers and dryers
Self serve or drop off
Debit and credit accepted

Come see us at
Owner attended
1218 N. Main St., Viroqua
countyseatlaundry.com

Endless Bluffs, Mighty Mississippi and the Kickapoo River Valley

YOUR LOCAL LIVE MUSIC GUIDE

SCAN HERE

VISIT OUR WEBSITE
DriftlessWisconsin.com

FOR OUTDOOR ADVENTURES AND SCENIC ITINERARIES

Photographer: Jason Ray

Distance in Miles to:

From	Wilton	Viroqua	Prairie du Chien
Chicago, IL	251	261	244
Milwaukee, WI	180	198	181
Green Bay, WI	169	204	241
Minneapolis, MN	188	188	214
Des Moines, IA	300	288	227
Quad Cities, IA	183	159	141

Follow us on social @DriftlessWisconsin

Driftless Wisconsin is a 501(c)3 non-profit organization. © Copyright 2025. While every effort has been made to ensure accuracy of the information in this guide, changes may have occurred between the time of completion and publication. Detailed research has taken place regarding historical facts; however, sometimes accounts can differ depending on the source. Driftless Wisconsin, Inc. assumes no responsibility for errors, changes, or omissions. Reproduction of or alterations to the materials used in the publication requires the written consent of Driftless Wisconsin, Inc.

DriftlessWisconsin.com